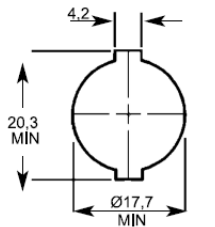


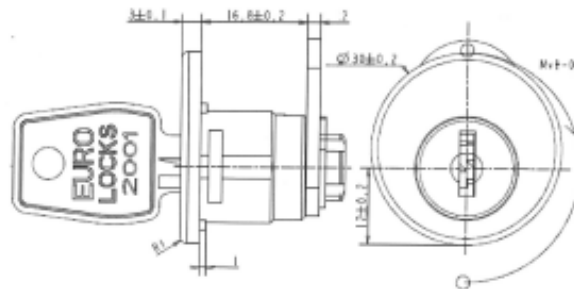
## 2000 series camlock F759



### Fixing hole & dimensions :



FIXING HOLE SIZE



### Lock specifications :

- Up to 2,000 differs
- Master keyed on request
- Steel keys as standard (brass keys on request)
- Capped keys, hinged keys, overmoulded keys on request
- Horse-clip fixing only ( milling X-02 as standard for panel thickness 0.8mm ⇒ 1.2mm)
- Cam 2mm thick only (circlip fixing)
- Mvt 03 / 04 available ( 180° - K/F both positions)
- 2 finishings : bright chrome (2A) & satin chrome (2C)

EURO-LOCKS SA, 1 Rue du Stade, F-57730 Folschviller, France  
Tel: +33 (0) 3 87 92 61 11 Fax : +33 (0) 3 87 92 42 04  
Email: [euro-locks@euro-locks.fr](mailto:euro-locks@euro-locks.fr) web: [www.euro-locks.fr](http://www.euro-locks.fr)