

# Wooden Office Furniture Locks

Lowe & Fletcher offers an extensive range of locking solutions for Wooden Office Furniture. Our range is designed to meet the needs of Wooden Office Furniture manufacturers from those seeking a value driven product through to advanced keyless and bespoke solutions.

We offer a variety of wooden furniture locks for tambour door units, desk pedestals, filing cabinets, lockers and office storage solutions.

The range includes door locks, rim locks, pedestal locks, espagnolet locks and multi-point locks. In addition we have a range of advanced mechanical and programmable electronic locks offering keyless solutions. We also design and make many customer specific locks.

If you are designing custom office furniture and would like advice on existing or bespoke lock options then please contact our team who will be happy to help you.



## New Products



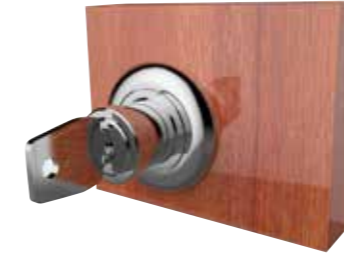
### Cap Special Coating

- Customised cap coating available on a wide range of locks
- Match a specific wood grain, metal finish, logo or image
- Ideal for corporate branding or elegant office designs



### SPF Key

- Key is foldable in 2 directions – sideways and vertical!
- Various finishes and colours available
- Fully customisable with your logo or brand



### Handle Camlock

- A design camlock that can be used as a handle for office furniture
- Available with or without a rosette
- Variety of finishes available

Lowe & Fletcher is a leading global manufacturer of locking systems for industry. You can buy from Lowe & Fletcher with confidence knowing that:

- We manufacture over 60 million locking systems annually from our UK and European factories
- We offer a vast range of quality locking solutions to a highly diverse customer base
- We work closely with our customers to design bespoke locking solutions specific to their exact requirements
- We can supply standard or bespoke products in high or low volumes
- We have a dedicated team with many years' experience in the locking systems industry
- We have made locks since 1889 and are a fifth generation family owned business

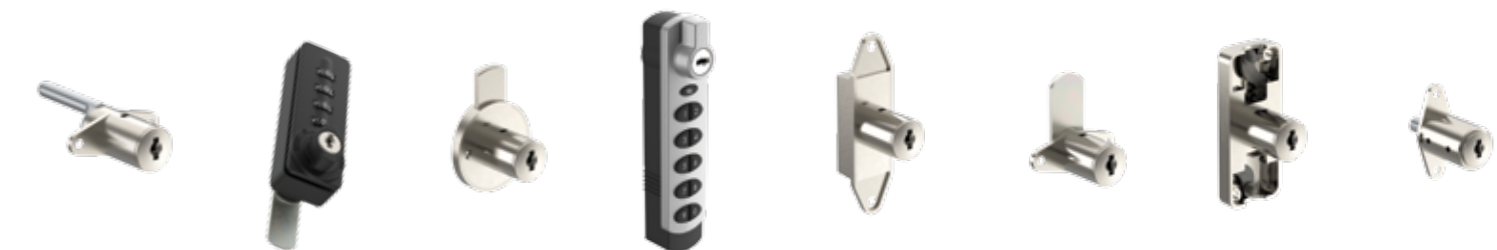
Lowe & Fletcher Inc.  
124 James Street  
Holland MI-49424

T: +1 (616) 994 0490  
F: +1 (616) 994 0480  
E: sales@loweandfletcherinc.com  
W: www.loweandfletcherinc.com

**L&F** A Lowe & Fletcher Group Company



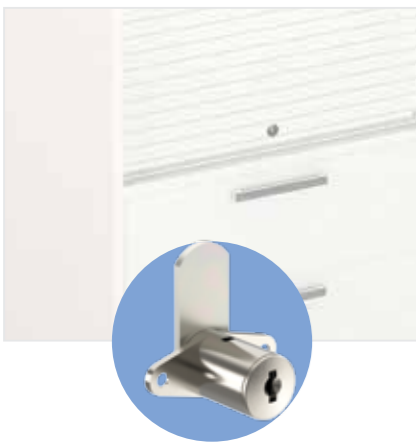
## Wooden Office Furniture Locks



# Wooden Office Furniture Locks



1. Tambour Locks



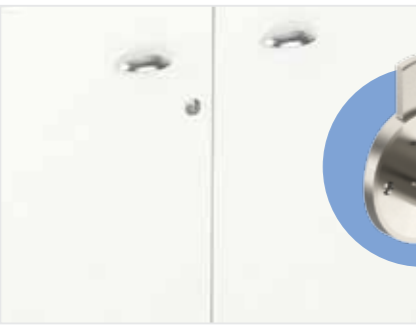
2. Push Locks



3. Espagnolet Locks



4. Rim Locks



5. Pedestal Locks



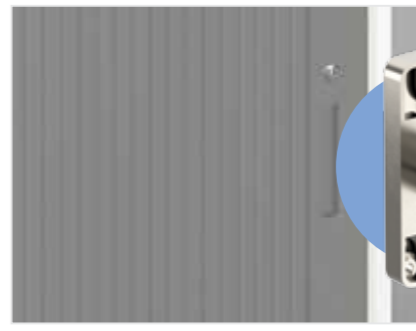
6. Mechanical Combination Locks



7. Electronic Locks



8. Multi-Point Locks



**1 Tambour Locks**

These locks are primarily for use on tambour doors and have a standard cam as the locking feature.

**2 Push Locks**

Range of locks suitable for use on sliding doors and glass doors.

**3 Espagnolet Locks**

An Espagnolet is a 3-point lock that is used to secure cupboards. The locking rod mechanism provides greater strength and security for cupboards and doors.

**4 Rim Locks**

Fixed to the surface of a door, the locking bolt is moved into the frame of the door or cupboard when locked.

**5 Pedestal Locks**

Locks that are designed for use on wooden pedestal furniture items such as desk drawer units.

**6 Mechanical Combination Locks**

Our range of mechanical combination locks have many different design features including key override and code finding functions. The common feature of such locks is that they eliminate the need for a key.

**7 Electronic Locks**

Designed to complement our traditional locking products, our range of electronic locks eliminates the need for keys and vastly reduces associated costs. With many different designs and features these adaptable locks are supplied with a choice of cams to suit almost every application. Our electronic locks can be programmed and managed remotely. They all come with key override as standard.

**8 Multi-Point Locks**

Multi-Point Locks are for use on applications which require multiple locking points, such as double opening cupboards, drawers and desks.