

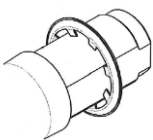


**ELLO** brings a new and fresh feel to the lockers world. The new look of latch locks is proudly introduced to the market place.

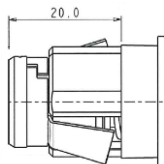
**Main Features:**

- ✦ Free wheel turning system
- ✦ Body and head made in ZAMAK
- ✦ New design giving a fresh impetus to the latch lock world
- ✦ Various fixing hole sizes
- ✦ Suited for padlock loops from 5 to 8mm diameter
- ✦ Three Body Lengths 31,70mm, 20,00mm, 19,50mm

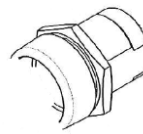
**Four Available fixings**



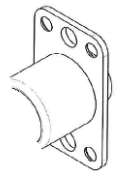
**Quick washer**  
(For 32 & 20mm body length)



**Quick Fixing**  
(Only 20mm body length)  
Panel thickness from 0,8 to 1,6mm



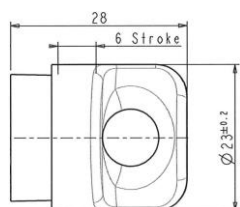
**Nut**  
(For 32 & 20mm body length)



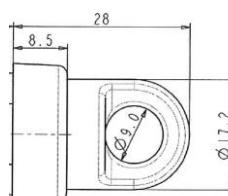
**Screw fixing for wood panels**  
(Only available with 19mm body length and restrained head)

**Two Available Head Shapes**

**Ergonomic Design = ELOH**



**Restrained Design = ELOW**



<b>ELOW</b>	Latch lock with low head	
<b>ELOH</b>	Latch lock with high ergonomic head	
<b>Body Lengths</b>		
<b>09</b>	19,5mm – special version with 4 screws fixing – only with ELOW	
<b>20</b>	20MM	
<b>32</b>	31,7MM	
<b>Piercing</b>		
<b>K</b>	16,6 x diameter 19,1mm	
<b>H</b>	Diameter 17,7 x 20,3mm (only available on snap in fixing version – ELOW/H20)	
<b>J</b>	16,0 x diameter 19,1mm	
<b>Z</b>	Diameter 23mm (only available on special version with 4 screws – ELOW09)	
<b>Shutter</b>		
<b>0</b>	Shutter not available	
<b>Cam Fixing</b>		
<b>C6</b>	Cam fitted with a clip (max 2mm cam thickness)	
<b>S6</b>	Cam with star piercing fixed with screw and washer	
<b>S7</b>	Cam with cross piercing fixed with screw and washer	
<b>Key Rotation</b>		
<b>01</b>	90° Clockwise	
<b>Finish</b>		
<b>7B</b>	Body and head in Bright Nickel	
<b>2A</b>	Body and head in Bright Chrome	
<b>8H</b>	Body in Bright Nickel and head in Black	
<b>1A</b>	Body in Bright Nickel and head in White powder coating <small>(RAL9010)</small>	
<b>Lock Fixing</b>		
<b>N</b>	Nut Fixing	
<b>H</b>	Horseshoe clip (please specify panel thickness)	
<b>S</b>	Snap In fixing (please specify panel thickness)	
<b>Z</b>	Fixing with 4 screws (not supplied)	
<b>Master</b>		
<b>0</b>	No masterkey system	



## EXAMPLE

<b>ELOW</b>	<b>32</b>	<b>K</b>	<b>0</b>	<b>LC</b>	<b>01</b>	<b>7B</b>	<b>N</b>	<b>0</b>
-------------	-----------	----------	----------	-----------	-----------	-----------	----------	----------

ELOW Lock – 32mm body length- fixing hole size diameter 19,1 x 16,6mm -- Cam fitted with e-clip - 90° Movement Clockwise – nickel finish – Nut fixing - Without Master.

Euro-Locks SA  
1 rue du stade  
57730 Folschviller

T: +33 (0)3.87.92.61.11  
F: +33 (0)3.87.92.42.04  
E: [euro-locks@euro-locks.fr](mailto:euro-locks@euro-locks.fr)  
W: [www.euro-locks.fr](http://www.euro-locks.fr)



**L&F** A Lowe & Fletcher Group Company